

FOR SALE

±69.25 AC | DEVELOPMENT SITE

103 LANDRUM MILL ROAD, LANDRUM, SC 29356

LEE & ASSOCIATES

COMMERCIAL REAL ESTATE SERVICES



LISTING DATA

ACREAGE: ±17.0 - 69.25 AC
ZONING: UNZONED
COUNTY: SPARTANBURG
CITY LIMITS: NO
TAX MAP #: 1-14-00-050.02

FEATURES:

- Can be Subdivided
- Located off of Highway 176
- ±4.5 Miles from I-26
- ±5.0 Miles from the SC/NC Border
- Norfolk Southern Rail Line
- All Utilities Available

ECONOMIC DATA

SALE PRICE: \$9,500 / AC



Jordan Skellie
jskellie@lee-associates.com
P 864.704.1040

Adam D. Padgett, SIOR
apadgett@lee-associates.com
P 864.704.1040

All information furnished regarding property for sale, rental, or financing is from sources deemed reliable, but no warranty or representation is made to the accuracy thereof and same is submitted to errors, omissions, change of price, rental or other conditions prior to sale, lease, or financing or withdrawal without notice. No liability of any kind is to be imposed on the broker herein.

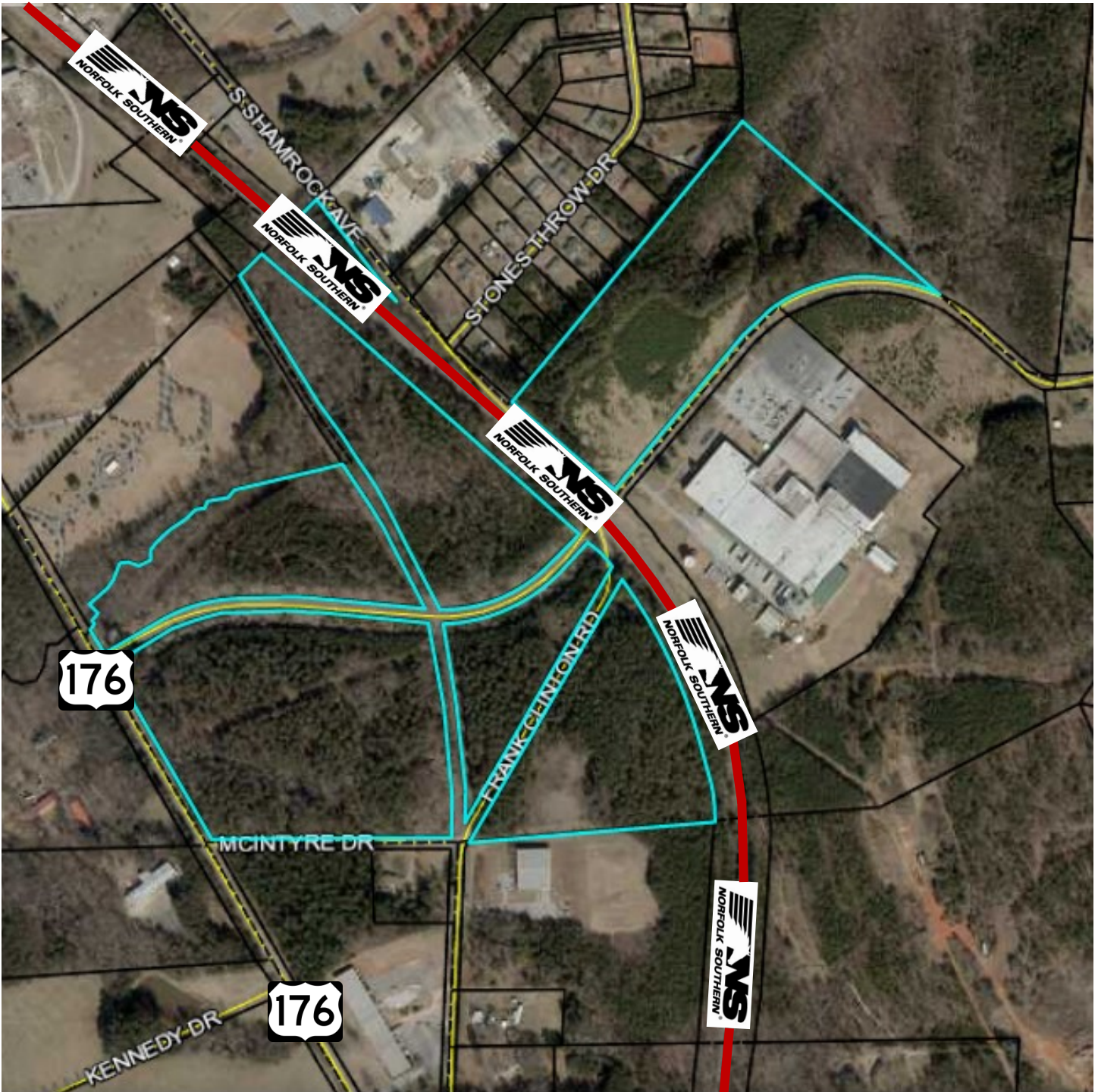
FOR SALE

±69.25 AC | DEVELOPMENT SITE

103 LANDRUM MILL ROAD, LANDRUM, SC 29356

LEE & ASSOCIATES

COMMERCIAL REAL ESTATE SERVICES



Jordan Skellie
jskellie@lee-associates.com
P 864.704.1040

Adam D. Padgett, SIOR
apadgett@lee-associates.com
P 864.704.1040

All information furnished regarding property for sale, rental, or financing is from sources deemed reliable, but no warranty or representation is made to the accuracy thereof and same is submitted to errors, omissions, change of price, rental or other conditions prior to sale, lease, or financing or withdrawal without notice. No liability of any kind is to be imposed on the broker herein.